

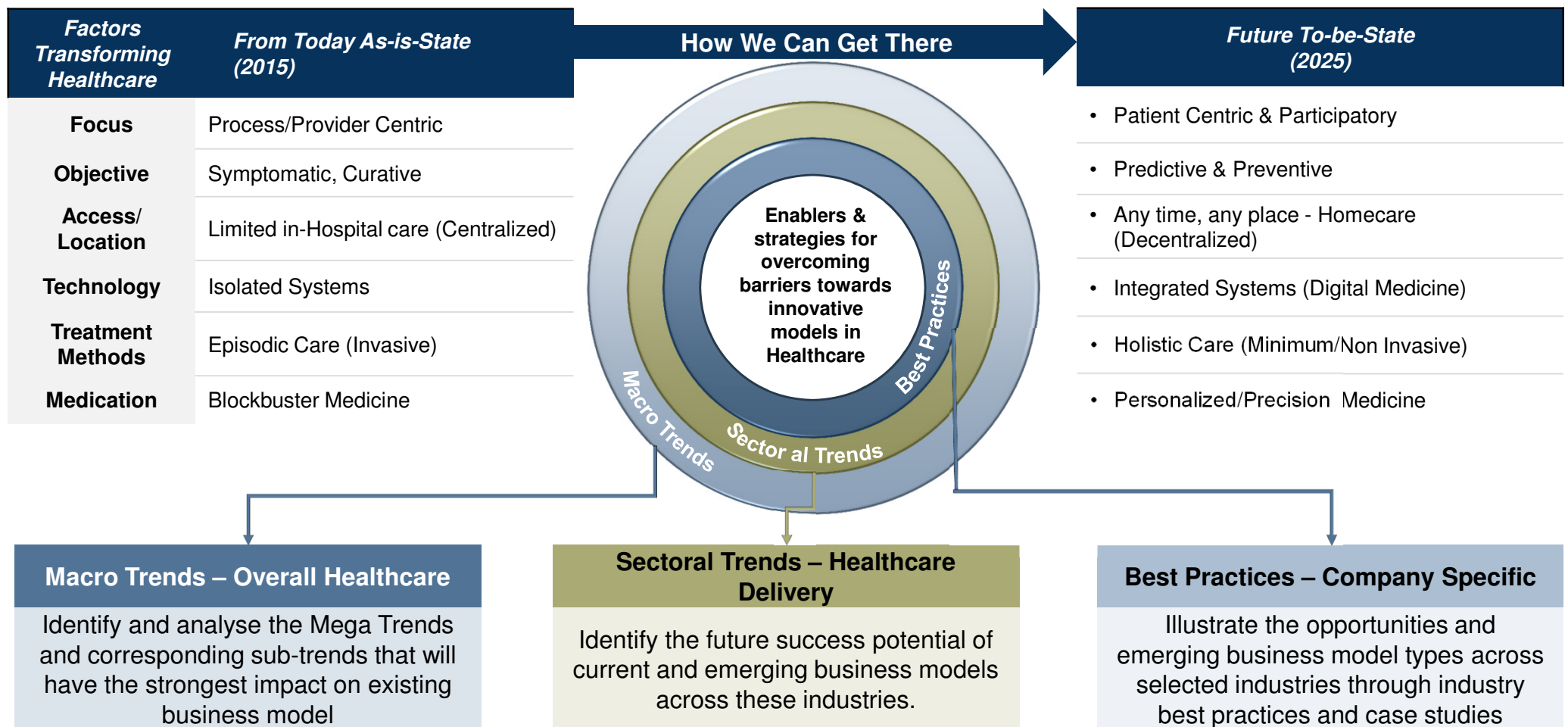
Transformational paradigms poised to redefine healthcare delivery

November 2016



F R O S T  S U L L I V A N

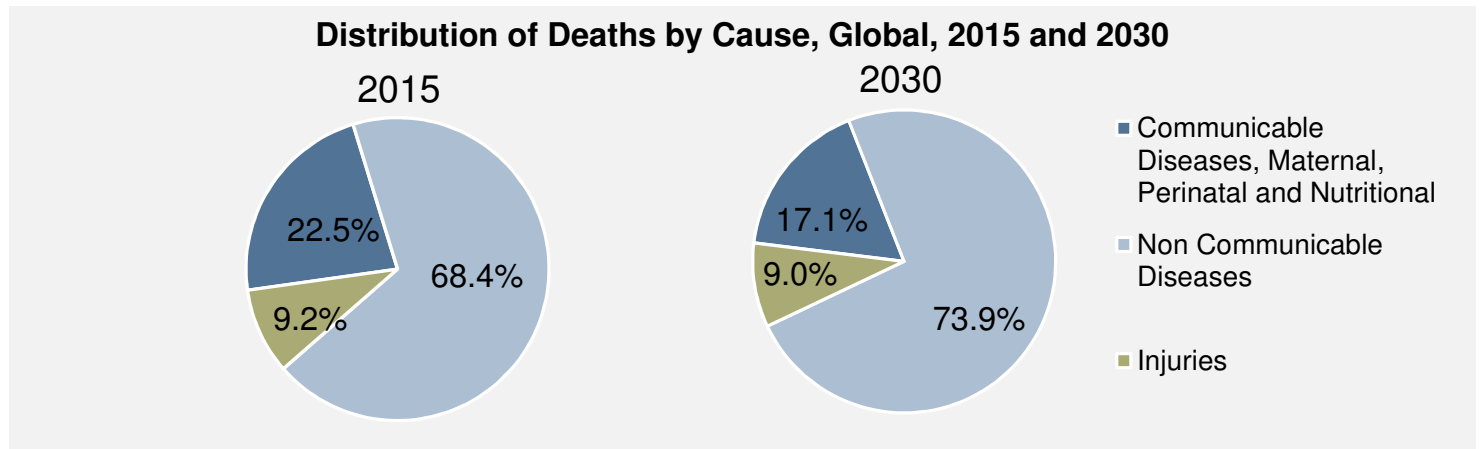
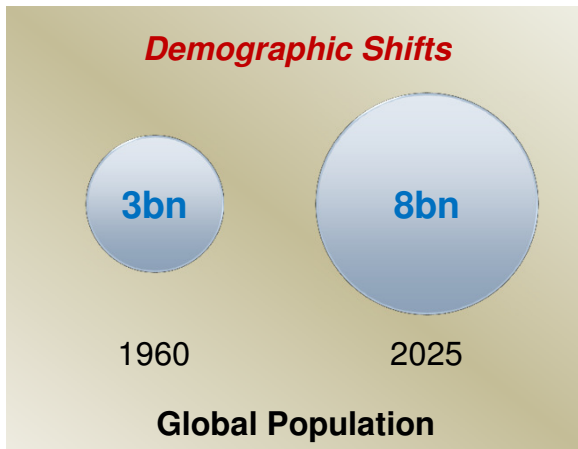
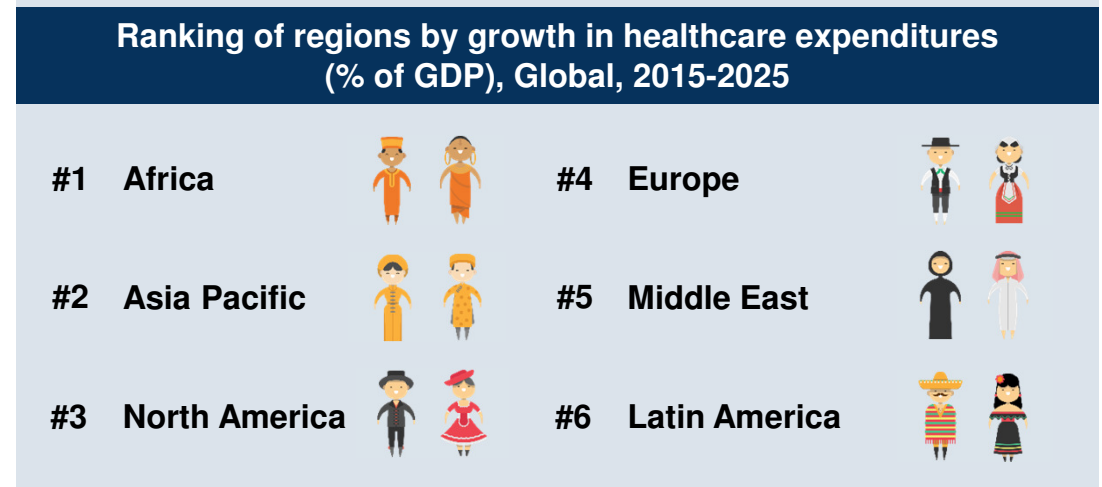
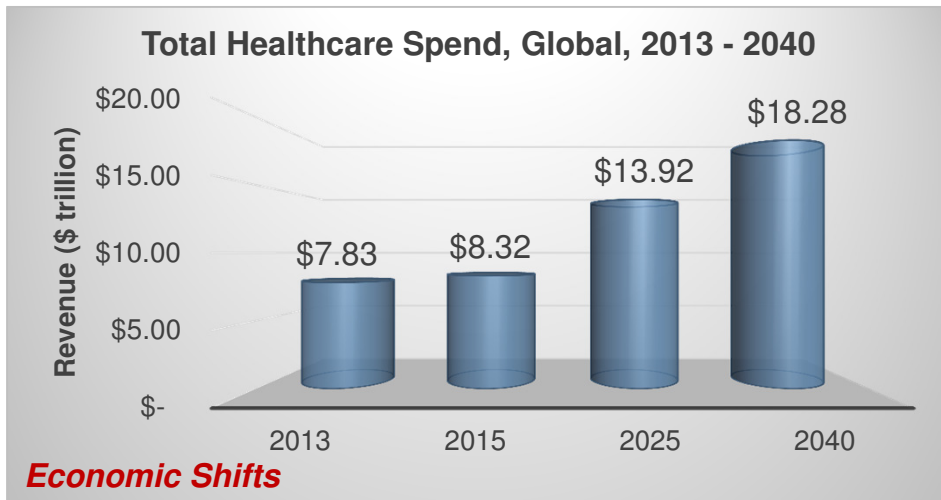
Frost & Sullivan's Transformational Health Practice Addresses the Forces Driving Change in Healthcare



The Impetus for Change

Macro Healthcare Spend Globally

It is expected that healthcare expenditure trends (2004-2014) will continue until 2025, with little change



Healthcare Approach – Personalization is Key

Customized care approaches will be the norm for healthcare

Patients’

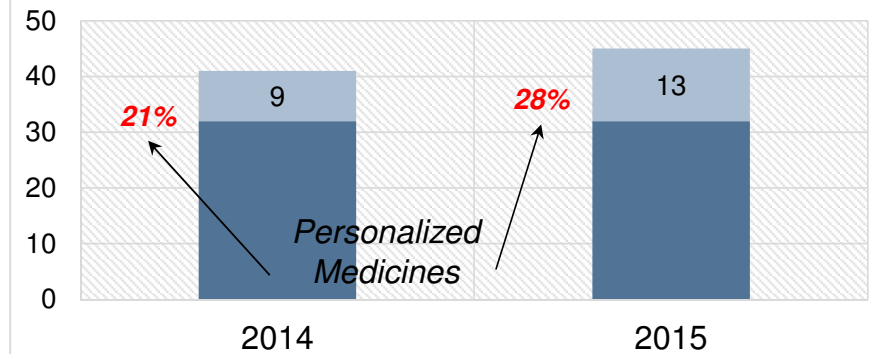
- Genetics
- Eating habits’ impact on health
- Response to medication



Are now being studied, moving away from the ‘one-size-fits-all’ approach

35% US patients feel “Doctors largely provide an impersonal service and have no time for their patients.”

Personalized Medicines’ Share of Novel New Drugs Approved by FDA, US, 2014 & 15



- | | | | |
|------------|-----------|-----------|-----------|
| • Zykadia | • Vimizim | • Nucala | • Rexulti |
| • Cardelga | • Harvoni | • Lonsurf | • Cholbam |

Select Models



Allows doctors to stratify chronic disease patients based on how well they are managing disease



Launched a personalized medicine initiative in partnership with Pfizer for Lupus research

Non-Healthcare



Customer selects contents of nutrition bar

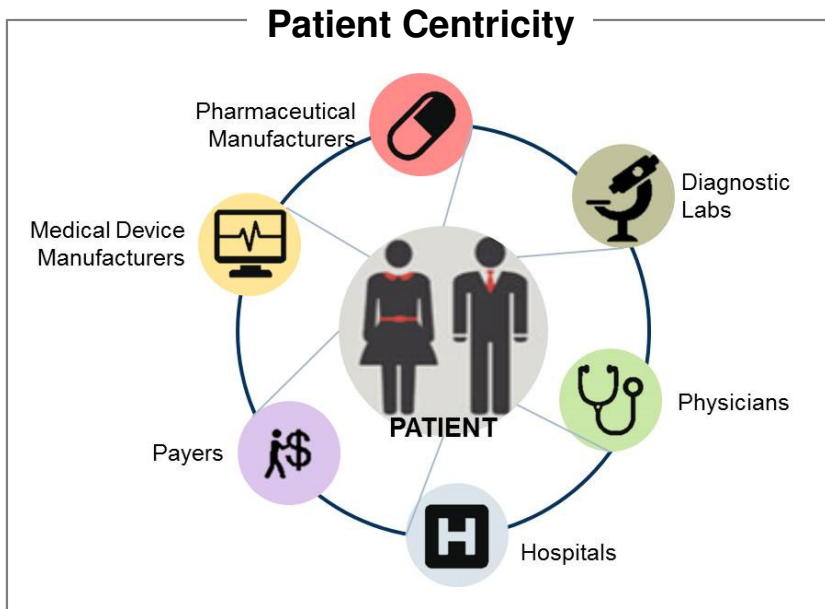


Time & location flexibility over home deliveries

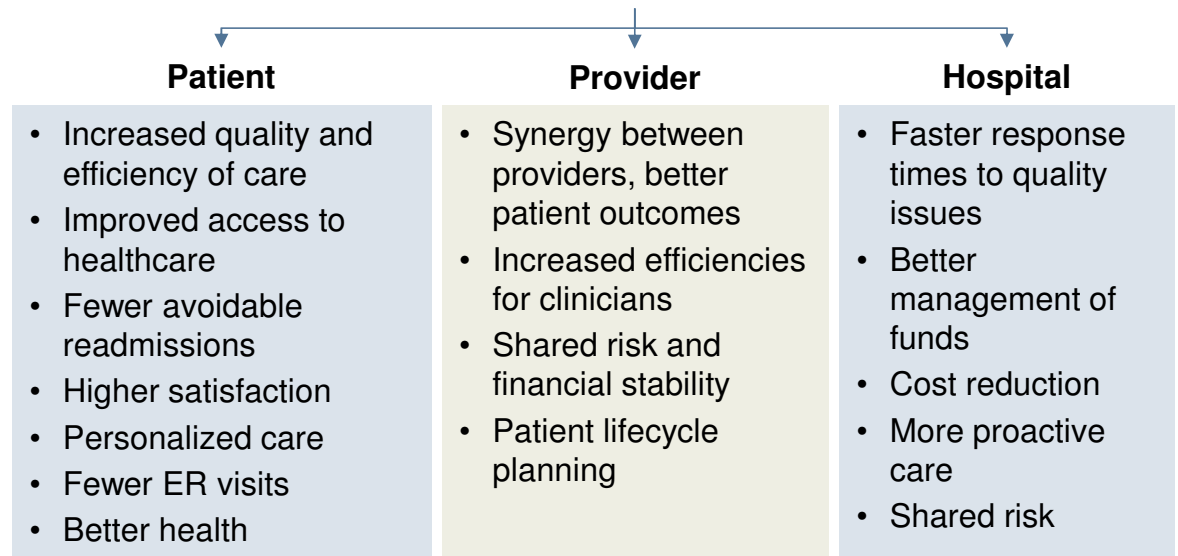
Image Source: Respective company websites. Source: Prophet Survey, Personalized Medicine Coalition, Frost & Sullivan

Clinical Outcomes – Norm of Patient Centricity

Patient centricity and population health are moving beyond the buzzword status, with some stakeholders implementing processes and changes to adapt to the concepts.



Population Health Benefits



Select Models



Population health tools use analytics that enable providers to segment and devise strategies for managing patient population



Population health platform allows analysis of patient data (inside and outside clinic) with features like automated interactions and EHR integration

Non-Healthcare



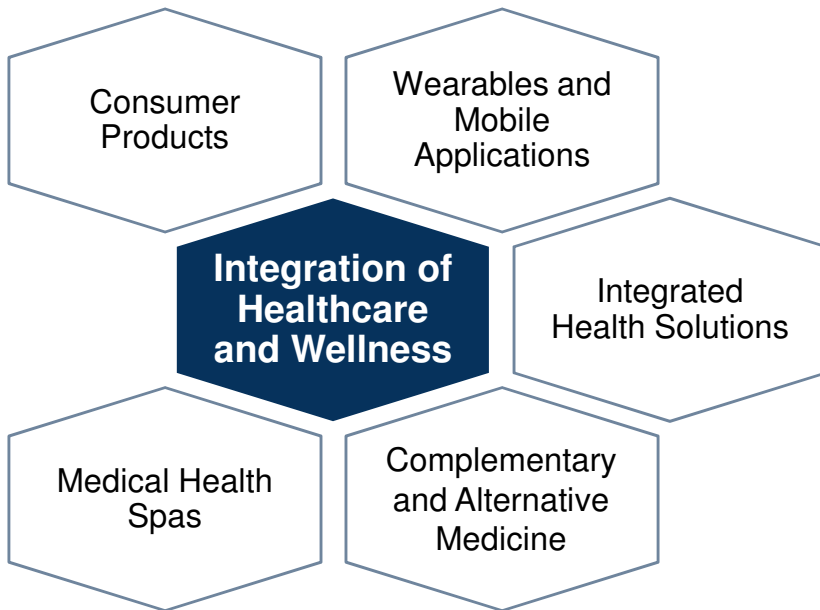
Meet customers where they are

Image Source: Frost Image Database. Respective company websites; Source: Beryl Health (now Stericycle Communication Solutions), Frost & Sullivan

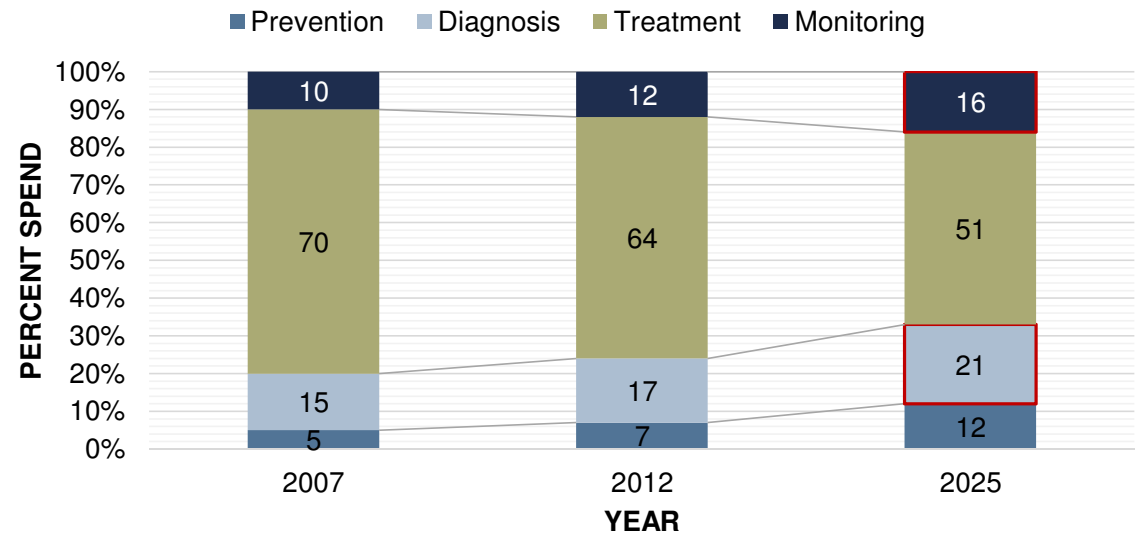
Treatment Focus – Shift to Wellness

Healthcare focus will shift from the sick to include the affected, vulnerable, and healthy, with the aim of prevention is better than cure

Healthcare Market: Healthcare Spend Areas, Global, 2015



Healthcare Market: Healthcare Spending by Type of Activity, Global, 2007–2025



Select Models



16-week online prevention program for people with high risk of chronic disease



Genetic testing services to help people make knowledgeable decisions



Patients can virtually connect with doctors for health queries

And many more



Government Policy Shifts

Macro-factors impacting government policies will shape the future of healthcare, and of other industries as well

Factors Influencing Policy Shifts



Population Growth



Climate Change



Migration



Technology

Other Healthcare-Affecting Policies



- Healthcare providers and manufacturers to invest in recycling and renewable energy resources
- Use of public transport systems encouraged to reduce carbon emissions
- Local business and communities preferred for healthcare trade
- Health literacy programs; part of school curriculums
- Financial incentives for retirees to lead a healthy life
- Income equality promotion
- Work-life balance improvements by regulating working hours

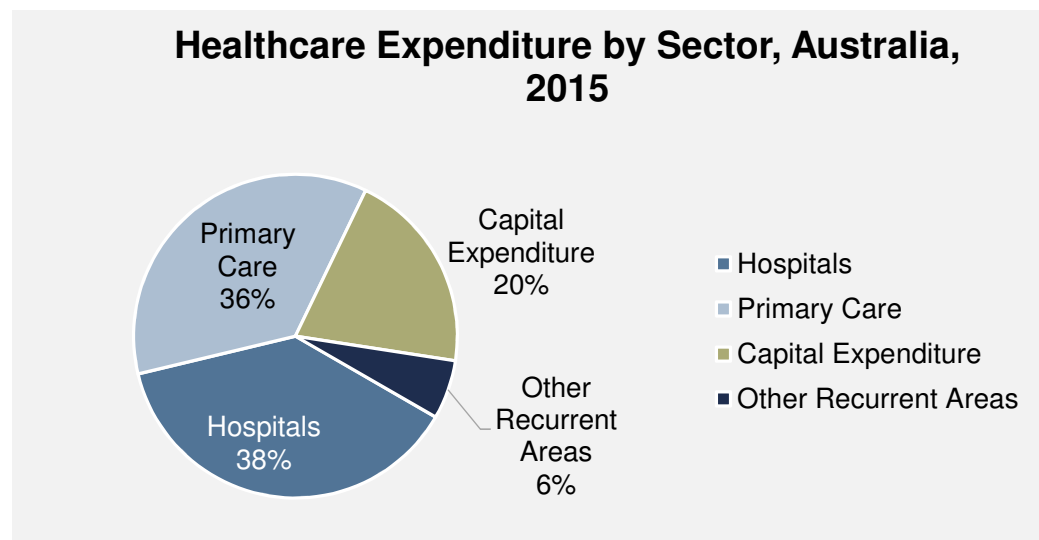
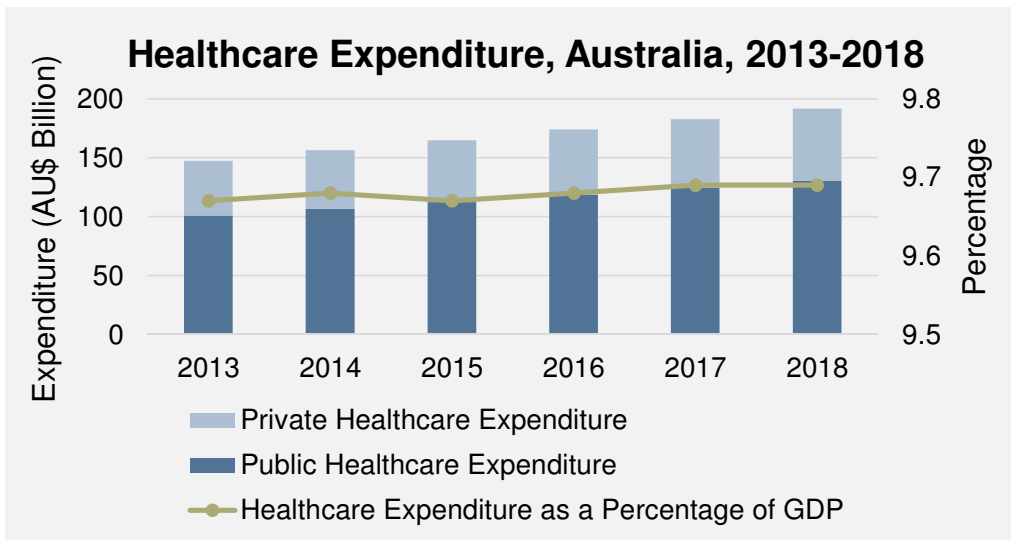
Healthcare Policy Shifts


- Focus on prevention, personalized health support
- Improving healthcare infrastructure a priority where necessary
- Hospitals focus on specialized treatments only; general, less-specialized care moves to other care delivery settings, including home
- Specific disease-focused efforts
- Increasing (% GDP) spend on healthcare
- Encourage walking, cycling and other carbon-neutral, health-enhancing modes of transport, supplemented by public networks




Australia within the Global Context


Healthcare expenditure per capita hits AUD 6,639... Not only the cost but also the sources of funding and their sustainability is a concern



Economic  Australian government expenditure on health and aged care systems will almost double from 18.5% in 2014 to 33% in 2050, a statistic that will see Australia overhauling its Medicare program and improve healthcare efficiency.

Socio-Political  Changes to health insurance regulation expected in Australia with the government framing new policies to provide care with 'value for money'.

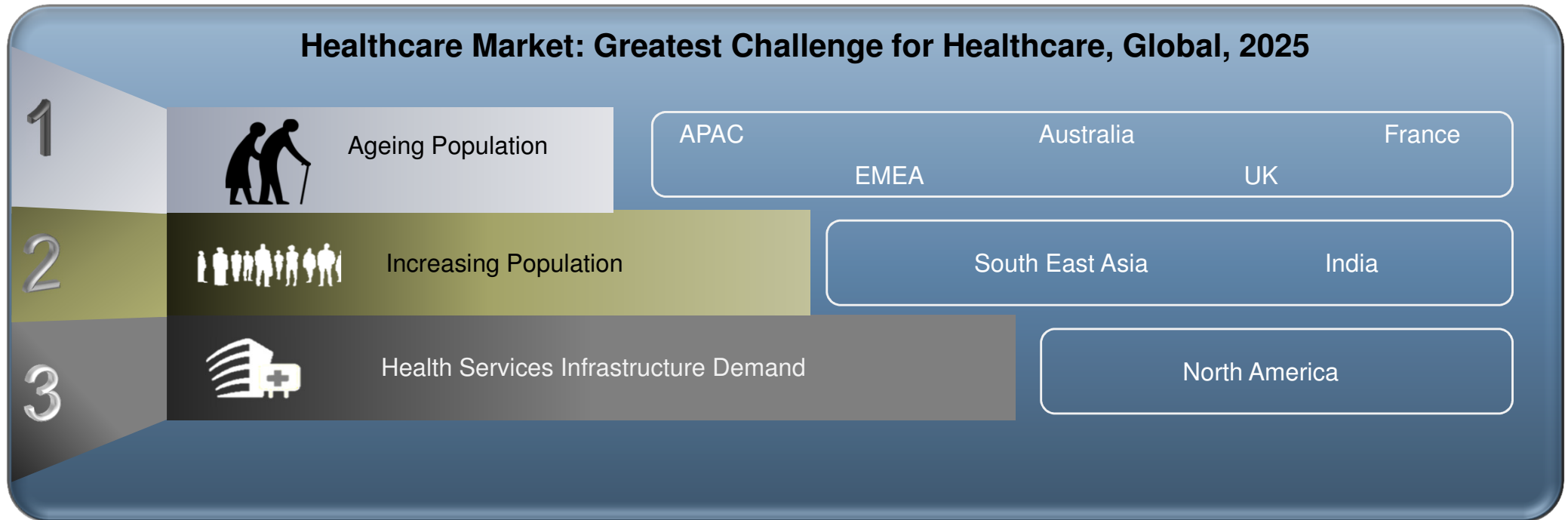
Health  In its focus on tackling chronic NCDs, the government is targeting chronic diseases (>11 million overweight Australians)

Technology  Availability of advanced telehealth services in Australia and increasing costs of nursing home care will continue to allow growth of 'in-home' care.

Source: Australian Institute of Health and Welfare (AIHW); Frost & Sullivan

2025 Healthcare Regional Challenges

Ageing population, population growth and demand for infrastructure are perceived to be the top global healthcare challenges



A burgeoning population in South-East Asia, especially India, is likely to become the greatest challenge for the region. The APAC and EMEA areas will struggle to serve the healthcare needs of ageing populations by 2025. North America on the other hand perceives health services infrastructure to be the major challenge.

Note: APAC-Asia Pacific
EMEA-Europe Middle East North Africa

Image Source: Pixabay, Frost & Sullivan; Source: 'Healthcare in 2025' Polycom Survey, Frost & Sullivan

Regional Inhibitors for Achieving a Better Healthcare Future

Funding, healthcare access and lacking government support are universal issues; wealth distribution disparity and increase in chronic disease incidences are top inhibitors for some of the developed regions

Region	Inhibitor #1	Inhibitor #2	Inhibitor #3	Global
North America	Access to healthcare	Wealth distribution disparity	Funding	#1 Funding
Europe, Middle East, North Africa	Funding	Inadequate government support	Access to healthcare	#2 Access to healthcare
UK	Funding	Inadequate government support	Rise in chronic diseases	#3 Inadequate government support
France	Funding	-	-	
Asia Pacific	Funding	Access to healthcare	Inadequate government support	#4 Wealth distribution disparity
Australia	Funding	Access to healthcare	Wealth distribution disparity	
South-East Asia	Funding	Access to healthcare	Inadequate government support	#5 Rise in chronic diseases
India	Access to healthcare	Inadequate government support	Funding	

- Globally, funding is a major inhibitor for achieving healthcare 2025 goals
- Regional variations are reflected in the perceptions of healthcare inhibitors – wealth distribution disparity is a major issue for developed regions, but inadequate government support is more worrisome for developing regions.

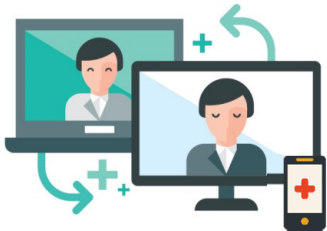
Note: Results from a survey of 1,200 Healthcare professionals conducted by Polycorn

Source: 'Healthcare in 2025' Polycorn Survey, Frost & Sullivan

2025 Regional Focus on Technology Applications

Inaccessible, remote regions abundant in APAC prompt them to seek virtual care delivery; lack of public health awareness drives need for health education; effective care coordination is the demand in developed regions

1



Virtual Care Delivery
*APAC
Australia*

2



Public Health Education
*South-East Asia
India*

3



Care Coordination
*North America
EMEA
UK
France*

Note: APAC-Asia Pacific
EMEA-Europe Middle East North Africa

Image Source: Thinkstock, flaticon; Source: 'Healthcare in 2025' Polycom Survey, Frost & Sullivan

The Future Healthcare Ecosystem

The Connected Healthcare Ecosystem

Integration & coordination of a broad spectrum of tools & technologies will result in seamless care delivery across settings

A connected ecosystem of sensors and devices on and around the individual serve the function of:

- Capture & Measure
- Identify
- Stratify Risks
- Inform
- Make Decision
- Take Action

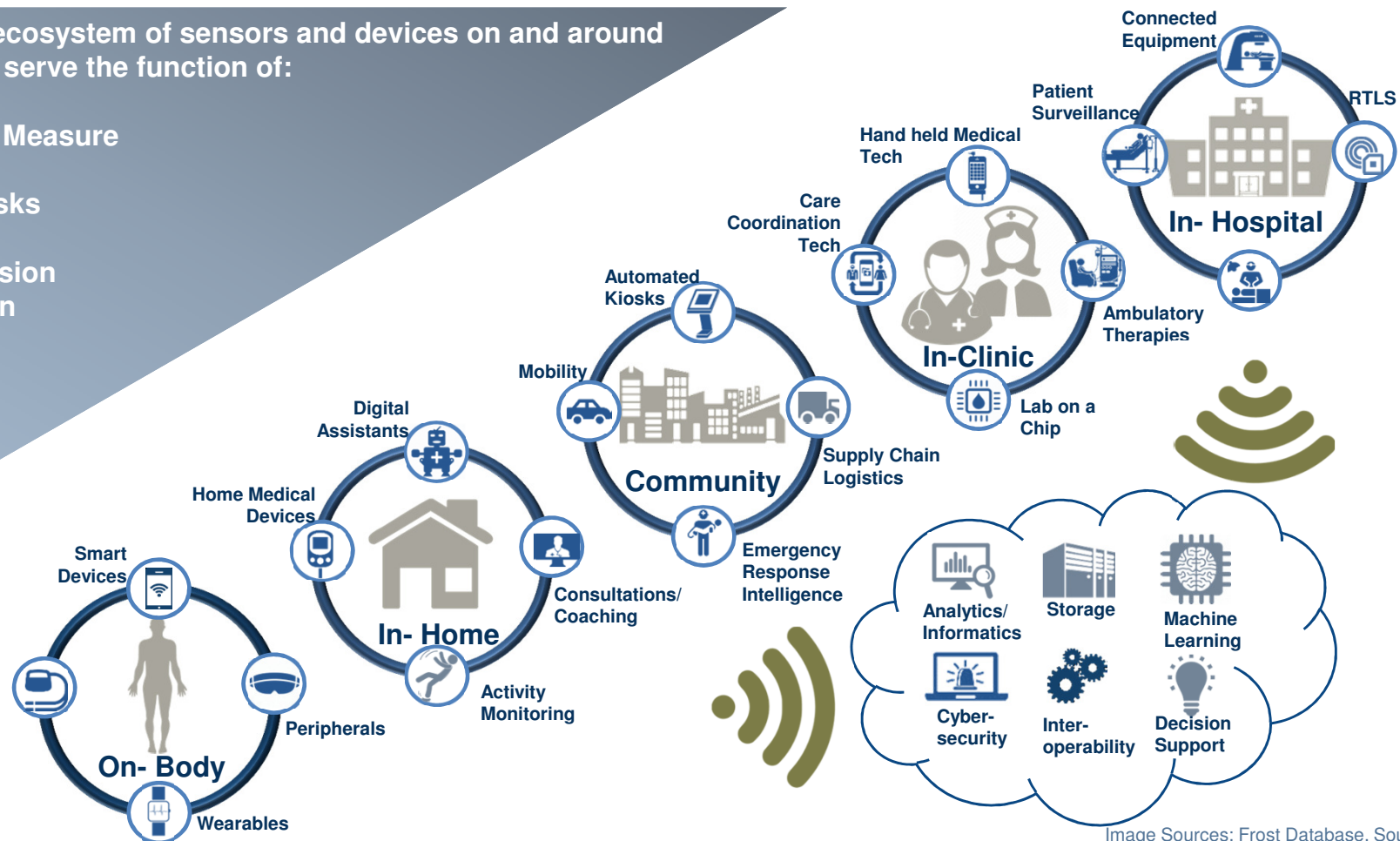


Image Sources: Frost Database. Source: Frost & Sullivan

Healthcare Industry Evolution

Marking an end of episodic and discrete treatment models, these new paradigms are aligned with long term strategy focus areas for payers, providers, patients, and solution developers

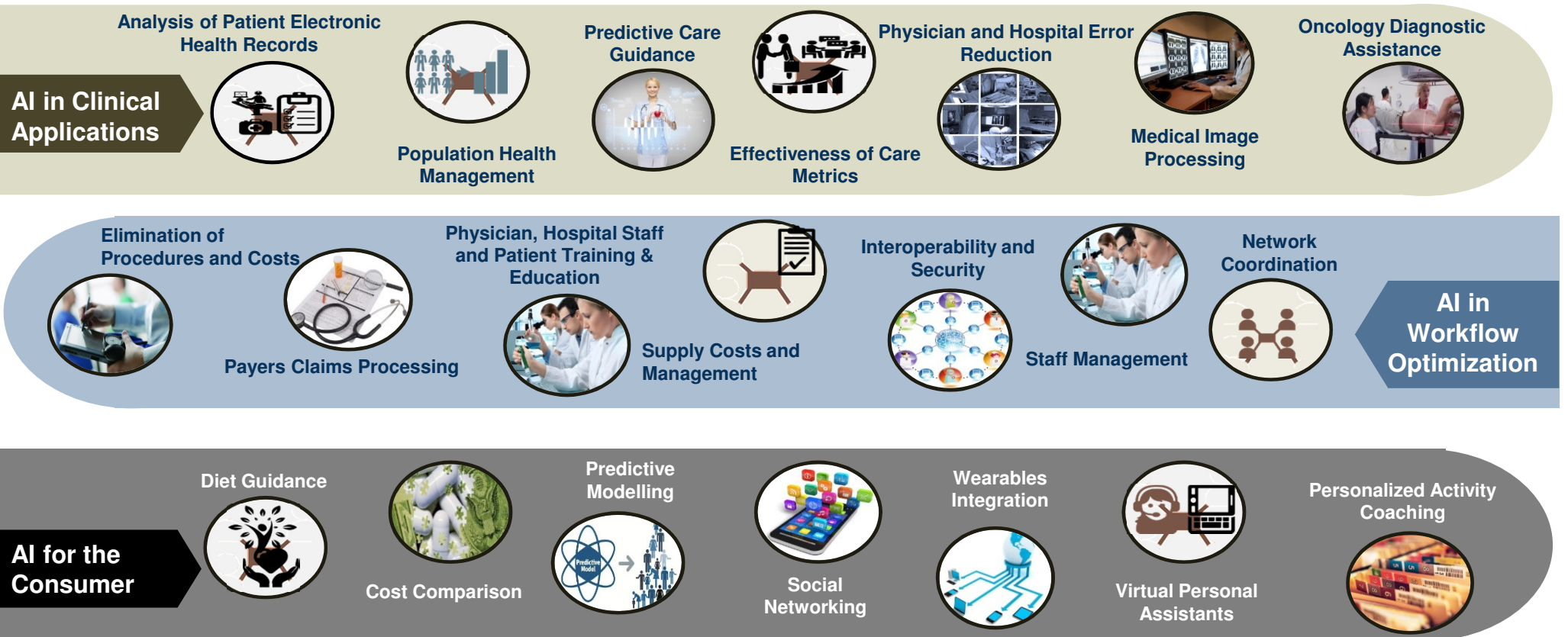


Image Sources: Thinkstock, Frost Database

Source: Frost & Sullivan

Healthcare Automation and AI will be Harnessed by Health Systems Increasingly to Enable Care and Reduce Costs

Use of AI beyond clinical can solve billions of dollars in administrative waste and enable patient engagement through deep learning systems



Concluding Thoughts

How will we integrate Primary Care and Home-based care considering the significant challenges population and growing incidence of chronic diseases?



Who will be our partners in the new era of open innovation?



How can we effectively create Digital Health Platforms, that extend your reach closer to the patient?



Where do we need to invest to move from a fee for service based model to an outcome and service-oriented business model?



How can we disrupt and transform the way healthcare is delivered?





Frost & Sullivan, the Growth Partnership Company, works in collaboration with clients to leverage visionary innovation that addresses the global challenges and related growth opportunities that will make or break today's market participants. For more than 50 years, we have been developing growth strategies for the Global 1000, emerging businesses, the public sector and the investment community. Is your organization prepared for the next profound wave of industry convergence, disruptive technologies, increasing competitive intensity, Mega Trends, breakthrough best practices, changing customer dynamics and emerging economies?

[Contact Us: Start the Discussion](#)

www.frost.com