

# SF-P160ZCV

16KG TOP LOAD WASHING MACHINE

## ULTRA-LARGE, WASHING MACHINE WITH HEATING ELEMENT



### Features

- 16kg Ultra Large Capacity
- 4 Star Water Rating
- 3 Star Energy Rating
- Auto Self Clean Function
- Stylish Toughened Glass Lid with Soft Closing function
- Sensor Safety Lock Lid
- Allergy UK Approved 99% Mold & Bacteria Reduction - Auto Self Clean
- Heating Element 40°/ 60°C
- Dual Jet Shower Function
- Quick & Simple 4 Button Control Panel - on lid
- Fine Adjustment Settings for individual settings - on lid
- Powered Inverter controls tub and pulsator rotation speed for optimum operation
- Delayed Start Timer
- Auto Power Off
- 14 Washing Programs
- 730 RPM Spin Speed

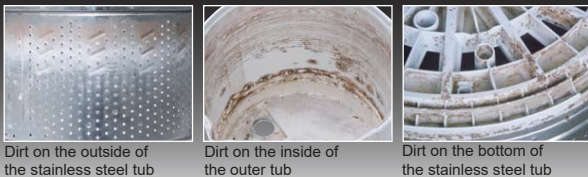


**POWERED  
INVERTER**

### AUTO SELF CLEAN – The Tub Stain Fighter

Don't jremove dirt, stop it from building up – every time you do your laundry, the washing machine automatically cleans itself!

In a washing machine, dirt doesn't easily accumulate where water collects or where it hits during spin-drying. In places that aren't touched by water, however, dirt gradually accumulates with use.



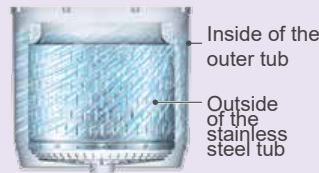
Dirt on the outside of the stainless steel tub | Dirt on the inside of the outer tub | Dirt on the bottom of the stainless steel tub

\*Hitachi washer-dryer. The level of dirt differs depending on conditions of use.

#### Tub Clean Program for Attached Dirt

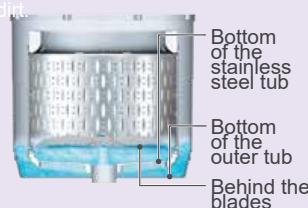
Auto Self Clean cannot remove accumulated dirt. Using special detergent, the Tub Clean program thoroughly removes attached dirt. Regularly using this program together with Auto Self Clean keeps the tub clean.

A shower of clean water cleans both the tubs as the stainless steel tub rotates at high speed.



Inside of the outer tub  
Outside of the stainless steel tub

Blades and tub rotate to powerfully agitate water in the stainless steel tub and clean off dirt.



Bottom of the stainless steel tub  
Bottom of the outer tub  
Behind the blades



Effective removal of mold and bacteria endorsed by Allergy UK



## Ultra Power 4-Step Wash

Thoroughly penetrates deep into fabric to effectively remove stubborn stains by controlling the water level to dissolve the detergent in 4 steps to maximise cleaning power



### Step 1 Dissolve

Dissolve the detergent at the lowest water level.

### Step 2 Penetrate

Enable the condensed detergent liquid to penetrate deep into the fabrics.

### Step 3 Soak

Detergent comes into complete contact with the surface of clothes.

### Step 4 Remove

Remove stubborn dirt at the normal water level.

## Ultra Power 4-Step Wash

Besides agitating clothes with a pulsator, powerful dual jets falling at two different levels make sure to reach the items at various water levels and circulate them vertically and horizontally for a multi-directional washing effect

### Easy Dissolver

Dissolve powder detergent powerfully to minimize the residue.



## 4-Button Control

With just four buttons, you can start washing. Alternately adjust wash settings (even while the unit is operating) with the simple, easy to use buttons on the glass lid. Adjust water power and water level while looking at clothes being washed in the tub.



## 40°C Stain Care Hot Wash with Built-in Heating Element

### Thorough Washing with Hot Water / Steam

The built-in heater produces 40 / 60°C hot water and a high temperature steam. This keeps your items fresh and odor free.

### 40°C Stain Care

With sweat comes oil (sebum), which causes the yellow stains. The enzymes in the washing detergent is activated by the 40°C water, which effectively remove the stain-causing oil.

Bacteria Reduction  
**99.9%**



○ Tested by Kitasato Research Center for Environmental Science. ○ Document Number : 2018\_0181. ○ Test methods: Measurement of the rate of decrease of bacteria on plates attached to the test cloth when using 40°C Stain Care course. ○ Test results: Reduction Rate 99.9%.

## 60°C Allergy Care Hot Wash with Built-in Heating Element

### 60°C Allergy Care – Hot Wash



### Hot Wash

#### Thorough Washing with Hot Water / Steam

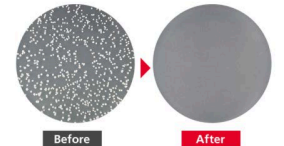
The built-in heater produces 40 / 60°C hot water and a high temperature steam. This keeps your items fresh and odor free.



### 60°C Allergy Care

60°C water is ideal for eliminating the bacteria that gets in the fabrics. With Hitachi 60°C Allergy Care, 99.99% of the bacteria is eliminated and free from odors.

Bacteria Reduction  
**99.99%**



○ Tested by Kitasato Research Center for Environmental Science. ○ Document Number : 2018\_0148. ○ Test methods: Measurement of the rate of decrease of bacteria on plates attached to the test cloth when using 60°C Allergy Care course. ○ Test results: Reduction Rate 99.99%.

## Easy Refresh



With a high temperature steam generated from the built-in heater, it removes unpleasant odors such as cigarettes without washing.



640mm (W) x 1,087mm (H) x 684mm (D)